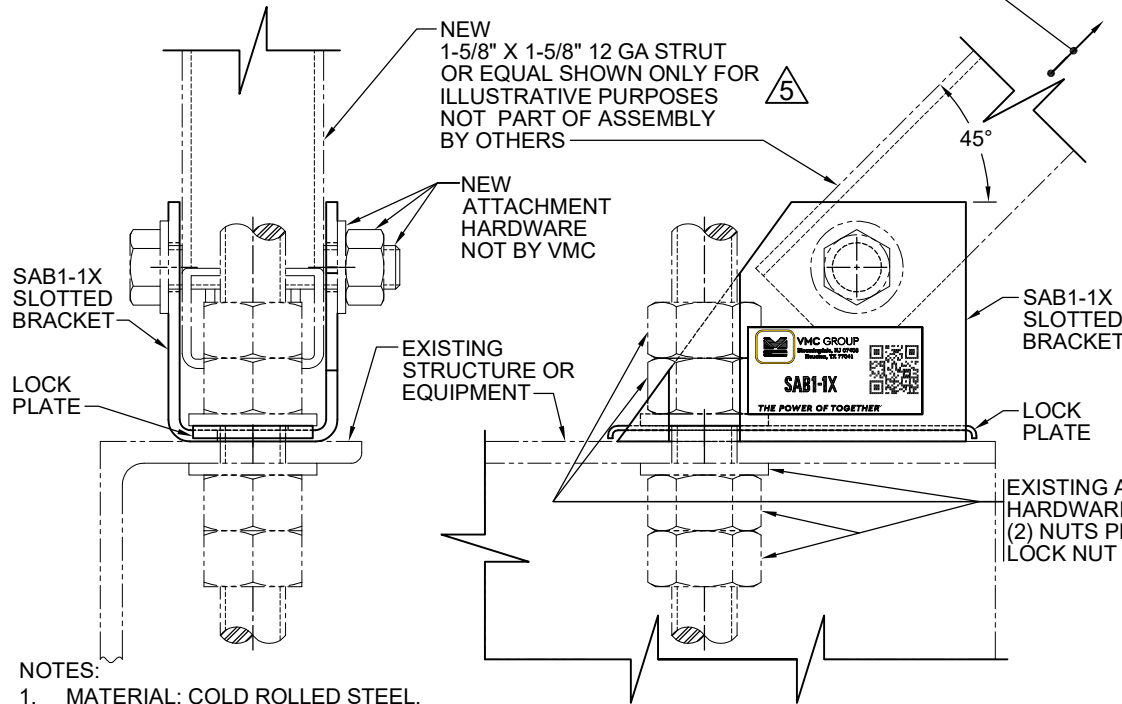


REV.	DESCRIPTION	DATE	BY

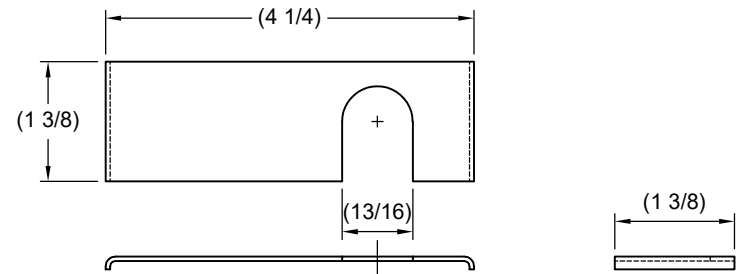
MODEL / PART NUMBER	BRACE MEMBER REFERENCE
SAB1-1X	STRUT (BY OTHERS)

OPPOSITE SIDE RESTRAINT PER
STANDARD VMC SAB1 OR SAB2
SEISMIC RESTRAINTS

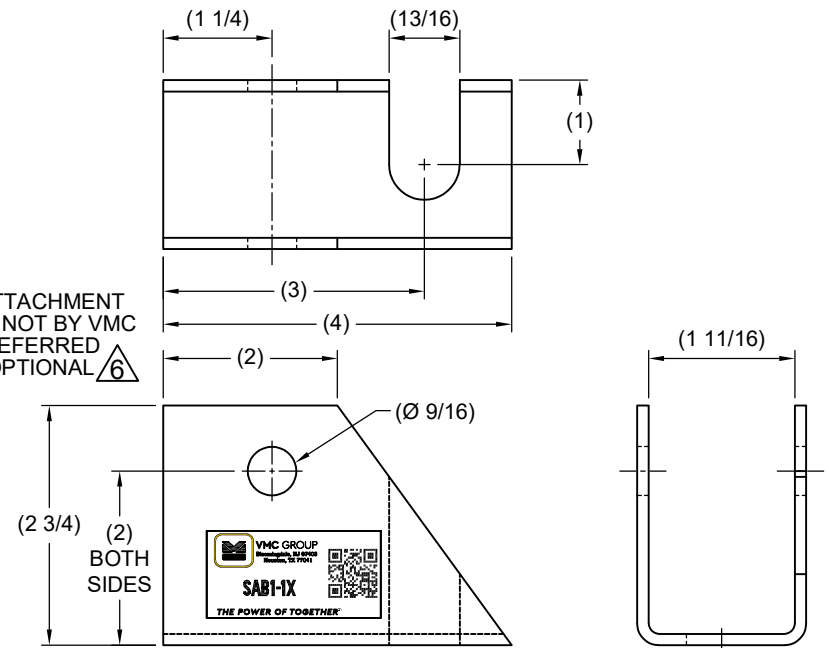


NOTES:

1. MATERIAL: COLD ROLLED STEEL.
2. ALL DIMENSIONS ARE IN INCHES; INTERPRET PER ANSI Y14.
3. ALL DIMENSIONS IN PARENTHESES ARE FOR REFERENCE ONLY.
4. STANDARD FINISH: YELLOW ZINC-PLATED.
5. SEE ENGINEERING DESIGN CRITERIA FOR STRUT TYPE & LENGTH LIMITATION DUE TO BUCKLING.
6. FIELD TORQUE 3/4\" NUTS TO 50 FT-LBS.
7. FOR STANDARD STRUT ATTACHMENT TO CEILING, SEE DRAWINGS 154R-103227 FOR SAB1 & 154R-103226 FOR SAB2 DETAILS.
8. FOR INSTALLATION OPTIONS, SEE DRAWING D-SGMEC-01.
9. REFER TO SHEET 2 OF 2 FOR INSTALLATION INSTRUCTIONS.

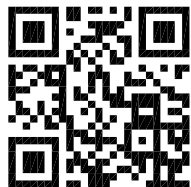


LOCK PLATE



SAB1-1X SLOTTED BRACKET

OTHER MATERIALS, COMPOUNDS, OR FINISHES WITH EQUAL OR SUPERIOR PROPERTIES MAY BE SUBSTITUTED AS THEY BECOME AVAILABLE.



CERTIFIED FOR:

JOB NAME: _____
 CUSTOMER : _____
 CUSTOMER P.O.: _____
 SALES ORDER: _____

**MODEL SAB1-1X SLOTTED
 BRACKET WITH LOCK PLATE
 SEISMIC BRACKET RESTRAINT
 FOR PRE-EXISTING
 SUSPENDED EQUIPMENT**



**VMC
 GROUP**
 THE POWER OF TOGETHER™
 Bloomingdale, NJ 07403
 Houston, TX 77041

SCALE :

NONE

SHEET:

1 OF 2

DRAWING NO.:

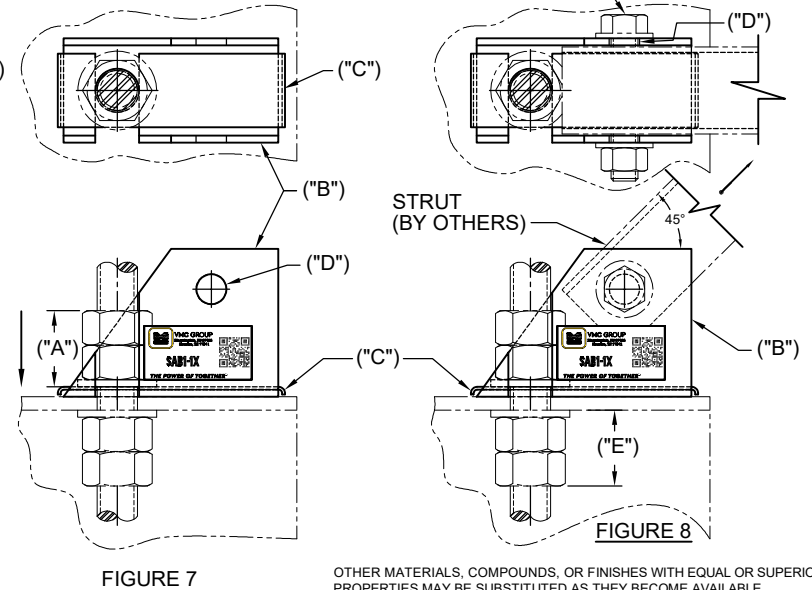
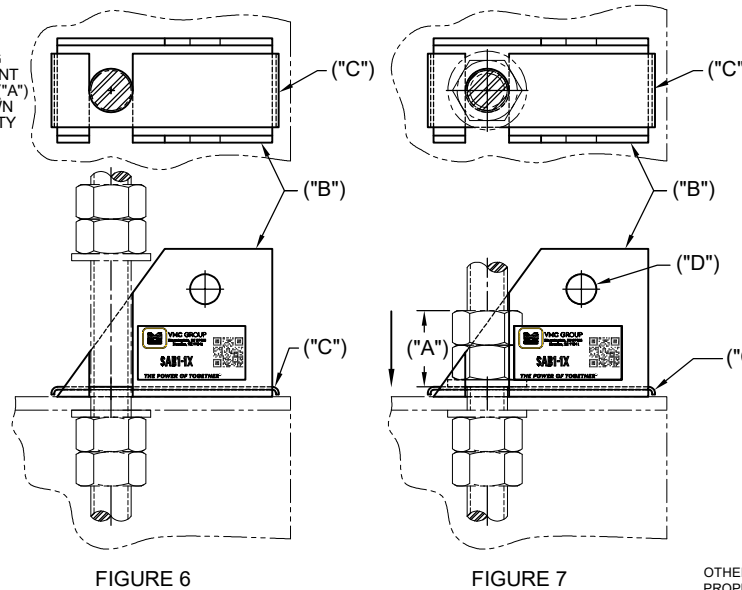
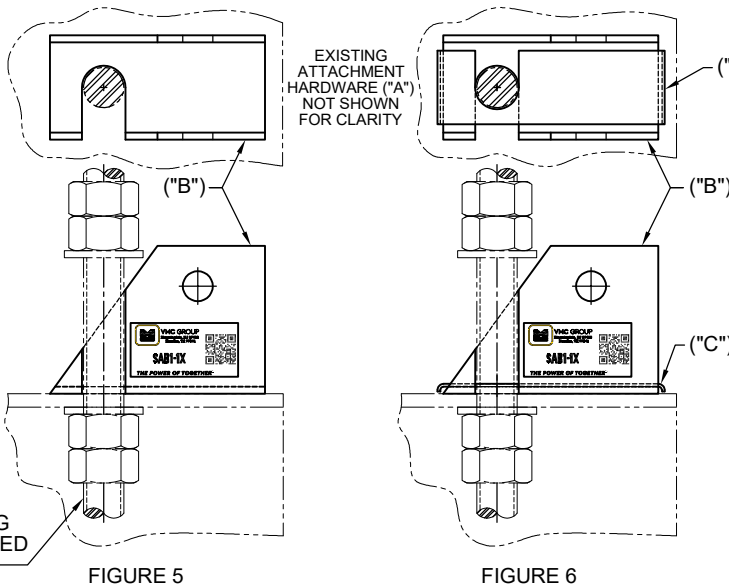
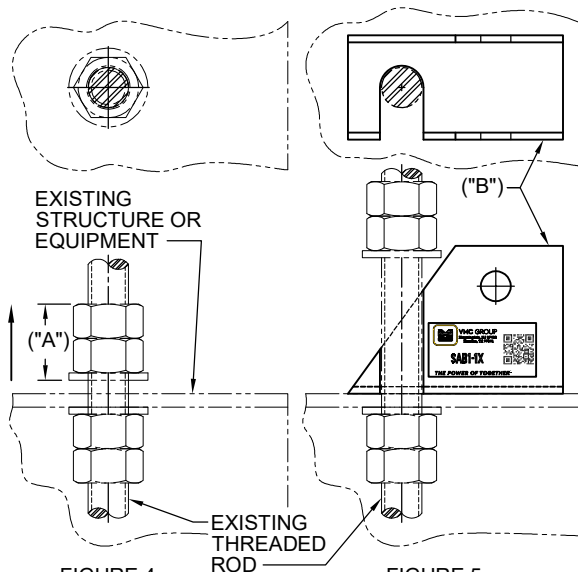
REVISION



REV.	DESCRIPTION	DATE	BY

1. READ INSTRUCTIONS IN THEIR ENTIRETY BEFORE BEGINNING INSTALLATION.

- THE OPPOSITE SIDE OF THE RESTRAINT SYSTEM USING THE STANDARD VMC GROUP SAB1 OR SAB2 SHOULD BE INSTALLED IN CONJUNCTION WITH THE INSTALLATION OF THE SAB1-1X SEISMIC RESTRAINT BRACKET ("B").
- THE SEISMIC BRACKET RESTRAINTS ARE TO BE POSITIONED ONLY AS SHOWN AND IN ACCORDANCE WITH THE SUBMITTAL DRAWINGS OR AS OTHERWISE RECOMMENDED.
- LOOSEN EXISTING ATTACHMENT HARDWARE ("A") AT THE EXISTING STRUCTURE OR EQUIPMENT. LEAVE ENOUGH ROOM FOR PLACEMENT OF THE SAB1-1X SLOTTED BRACKET ("B") AND ITS LOCK PLATE ("C"). [FIGURE 4 BELOW]
- LINE UP THE SLOT OF THE SAB1-1X SLOTTED BRACKET ("B") WITH THE EXISTING THREADED ROD. SLIDE THE BRACKET ("B") UNTIL THE THREADED ROD IS FULLY ENGAGED. [FIGURE 5 BELOW]
- LINE UP THE SLOT OF THE LOCK PLATE ("C") WITH THE EXISTING THREADED ROD AND THE SAB1-1X SLOTTED BRACKET ("B") WITH THE LOCK PLATE ("C") SLOT POSITIONED IN THE OPPOSITE DIRECTION OF THE BRACKET'S ("B") SLOT. ENSURE THAT AN ENCLOSURE HOLE IS CREATED BY THE BRACKET ("B") AND THE LOCK PLATE ("C") SLOTS THAT SURROUND THE EXISTING THREADED ROD. PLEASE NOTE THAT THE BENT SIDES OF THE LOCK PLATE ("C") SHOULD FACE DOWN AND OVERLAP THE BASE OF THE SAB1-1X SLOTTED BRACKET ("B"). [FIGURE 6 BELOW]
- RE-ENGAGE THE EXISTING ATTACHMENT HARDWARE ("A") ENOUGH TO KEEP THE SAB1-1X SLOTTED BRACKET ("B") AND LOCK PLATE ("C") FROM BECOMING DISPLACED. HOWEVER, DO NOT FULLY TIGHTEN AT THIS POINT. [FIGURE 7 BELOW]
- CONNECT THE STRUT (BY OTHERS) TO THE SAB1-1X SLOTTED BRACKET ("B") USING THE 9/16" DIAMETER HOLES ("D") IN THE UPRIGHT SIDES OF THE BRACKET ("B") WITH 1/2" HARDWARE (BY OTHERS) (HARDWARE GRADE SELECTION BY OTHERS). [FIGURE 8 BELOW]
- FULLY TIGHTEN THE EXISTING ATTACHMENT HARDWARE ("A") OVER THE SAB1-1X SLOTTED BRACKET ("B") AND LOCK PLATE ("C") SLOTS.
- TORQUE THE EXISTING ATTACHMENT HARDWARE ("E") BENEATH THE EXISTING STRUCTURE/EQUIPMENT AND BRACKET ("B") TO 50 FT-LBS.
- INSTALLATION IS COMPLETE.



OTHER MATERIALS, COMPOUNDS, OR FINISHES WITH EQUAL OR SUPERIOR PROPERTIES MAY BE SUBSTITUTED AS THEY BECOME AVAILABLE.



CERTIFIED FOR:

JOB NAME: _____

CUSTOMER: _____

CUSTOMER P.O.: _____

SALES ORDER: _____

MODEL SAB1-1X SLOTTED BRACKET WITH LOCK PLATE SEISMIC BRACKET RESTRAINT FOR PRE-EXISTING SUSPENDED EQUIPMENT



VMC GROUP
THE POWER OF TOGETHER®
Bloomington, NJ 07403
Houston, TX 77041

SCALE:

NONE

SHEET:

2 OF 2

DRAWING NO.:

REVISION

